

DAIMLER TRUCK

RIZONCONNECT USER MANUAL

TO CONNECT ALL WHO KEEP THE WORLD MOVING

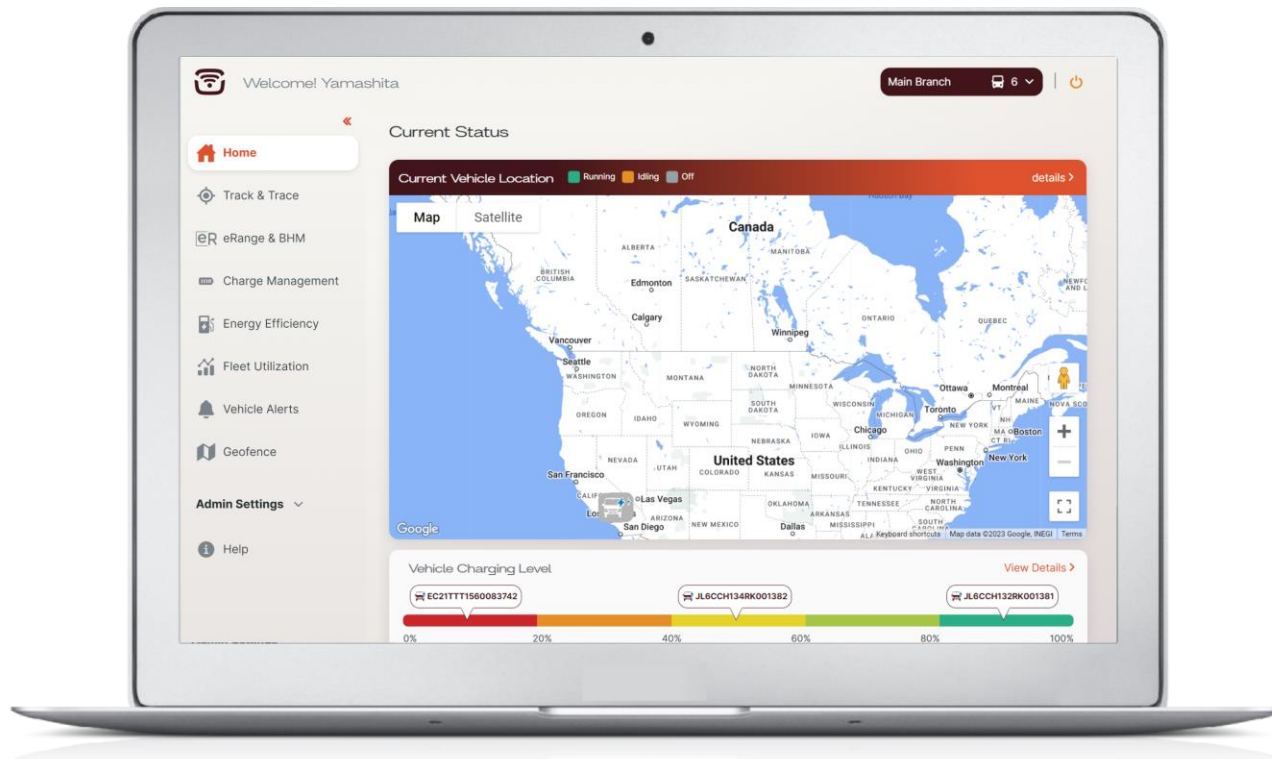


Table of Contents

01	<u>Dashboard</u>
02	<u>Track and Trace</u>
03	<u>eRange and BHM</u>
04	<u>Energy Efficiency</u>
05	<u>Fleet Utilization</u>
06	<u>Vehicle Alerts</u>
07	<u>Geofence</u>
08	<u>Admin Settings</u>
09	<u>Help</u>



- an **interactive portal**
- using **real-time vehicle data** extracted directly from cTP
- for **monitoring** and **analyzing** fleet and processes
- including **fleet utilization**, **energy consumption**, and **fleet location**
- with **24/7** support from the **Customer Assistance Center**



The six functions are mutually linked to contribute to business efficiency





01 DASHBOARD

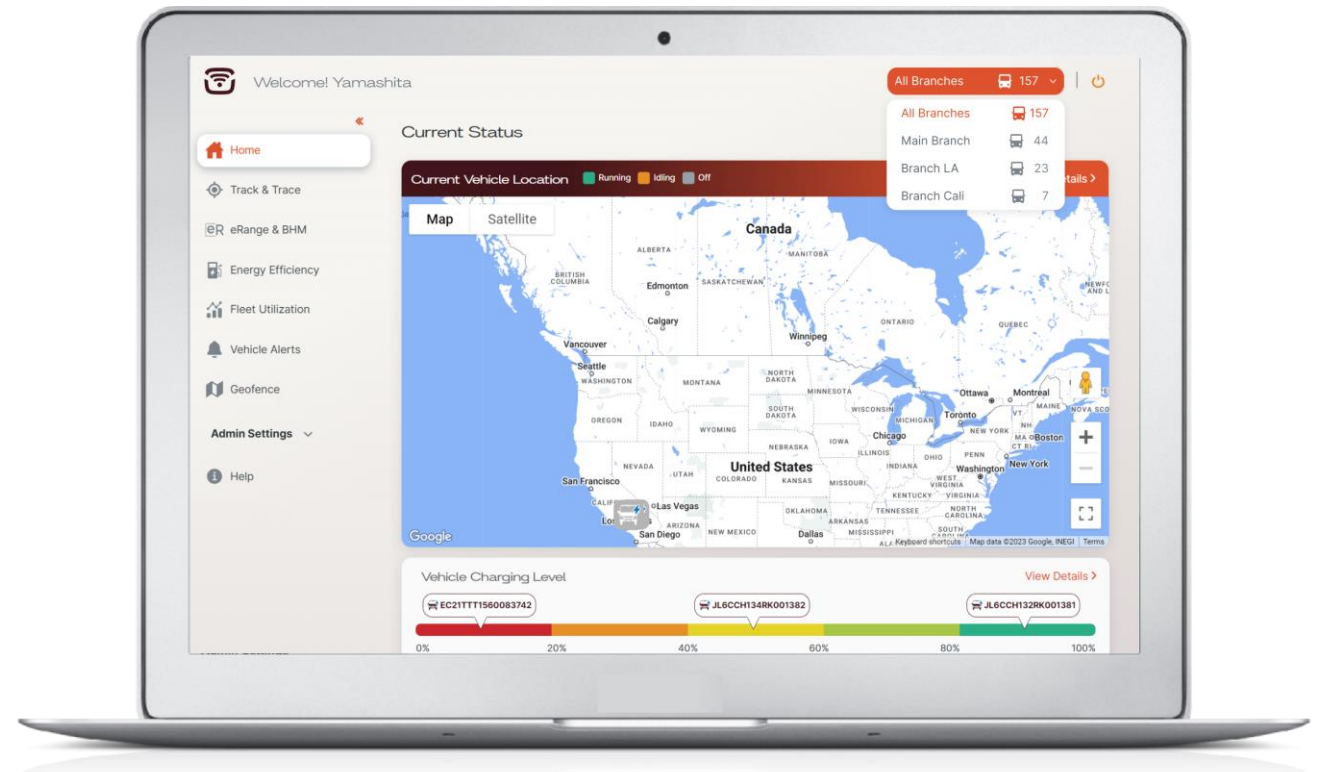
Get an instant overview of your fleet, monitor your vehicles, and track their performance in real time

Features

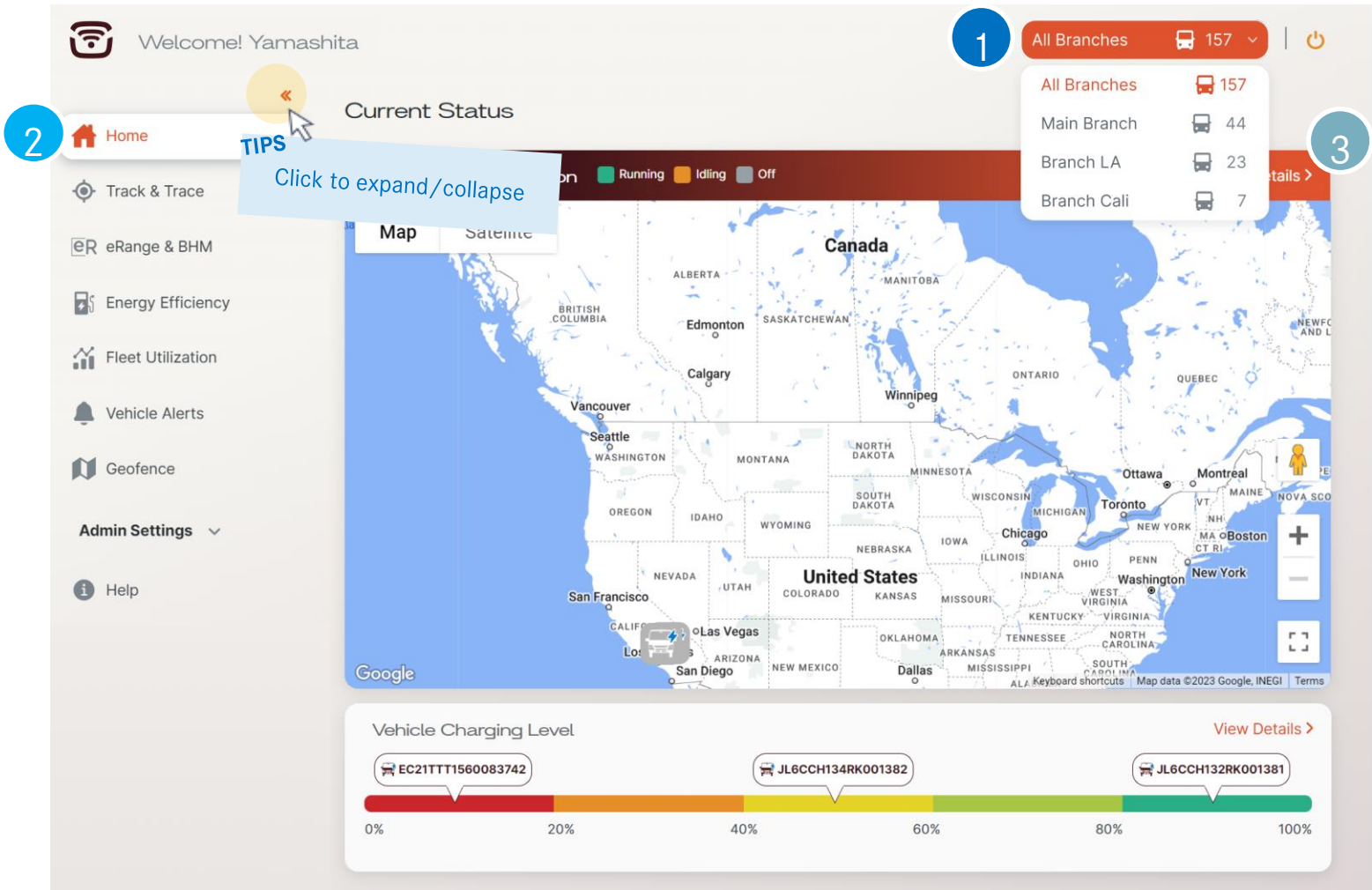
- Map overview of current truck location and status
- High-level summaries of monthly fleet trends (fleet utilization and energy efficiency)
- Track & Trace each individual vehicle
- Alerts and report notifications

Customer Benefits

- ♥ Transparency & visibility
- ♥ Accurate tracking & monitoring
- ♥ All the essential information conveniently displayed on a single page

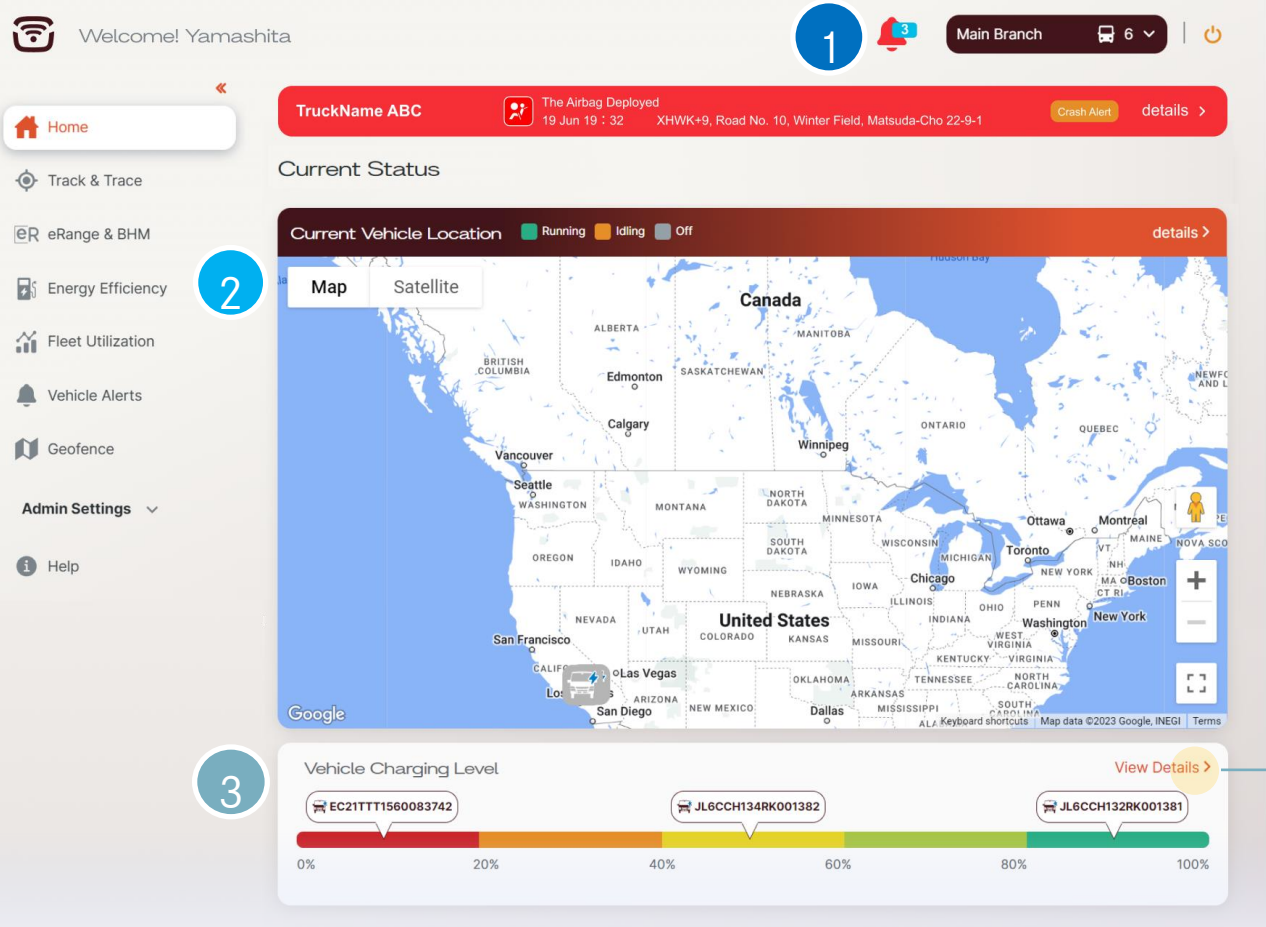


01 Dashboard: Overview

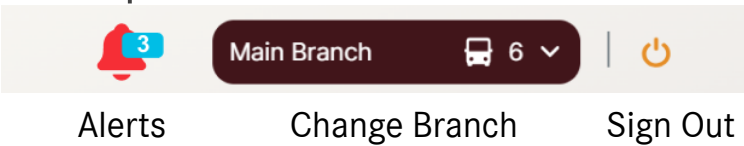


- ① Top Menu
- ② Navigation Bar
- ③ Main Screen

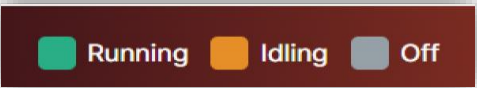
01 Dashboard



① Top Menu



② Map



Status of all Vehicles

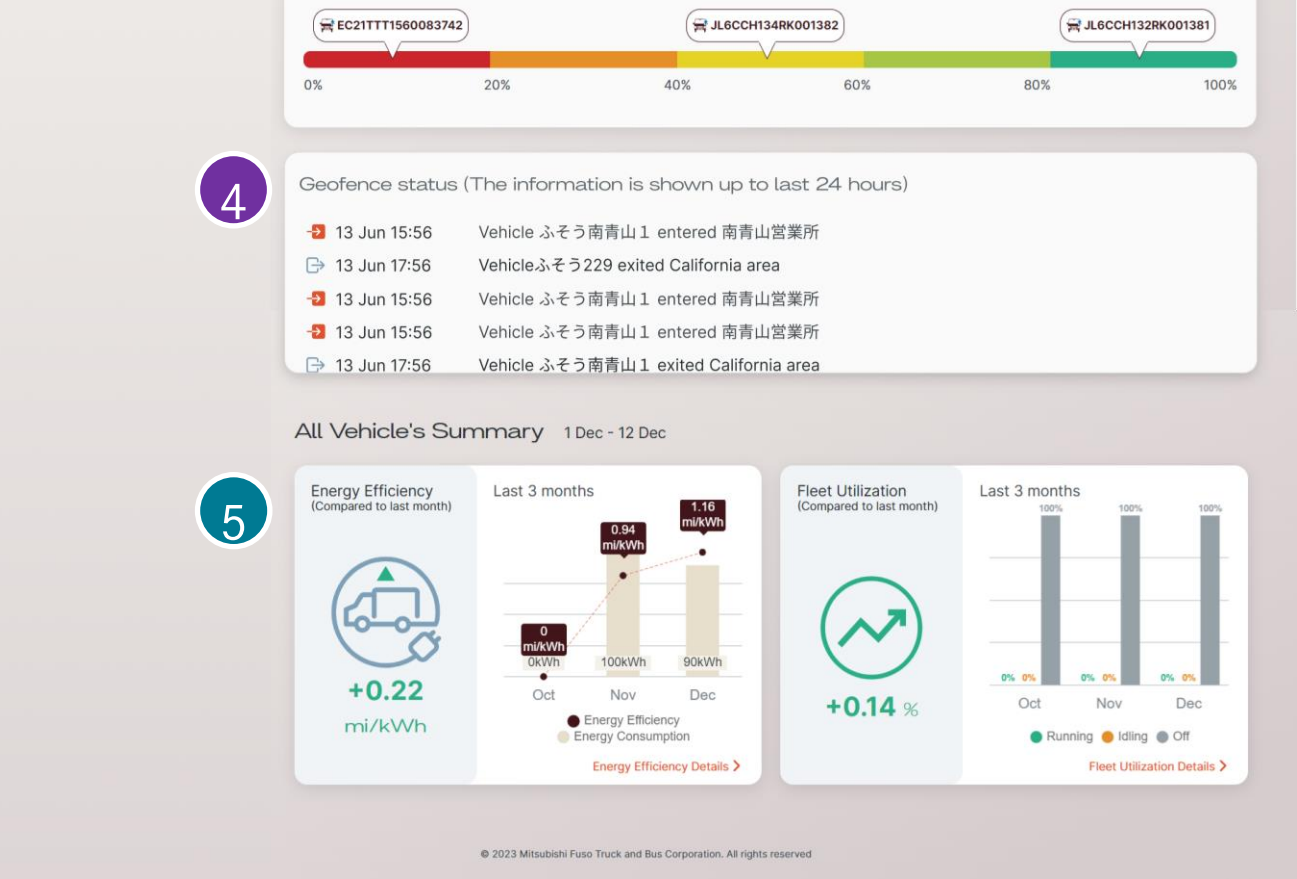
③ Vehicle Charging Level

The vehicle charging status in your fleet, sorted into 5 ranges. By clicking "View Details", a detailed list of all vehicles with SOC will appear.

Vehicle Name	Charge Level (%)	Remaining Range (km)	Battery Health (SOH)	Battery Type
Truck 1	90%	100	90%	Small
Truck 2	90%	100	75%	Small
Truck 3	75%	100	80%	Large
Truck 4	30%	75	78%	Small
Truck 5	90%	100	90%	Medium

More content explanation on the next page

01 Dashboard (2)



① Geofence Status

Status of each vehicle entering a specific area

② Change Month

Energy Efficiency, Fleet Utilization:
Simply click on each summary to go
to the detail page



02 TRACK & TRACE

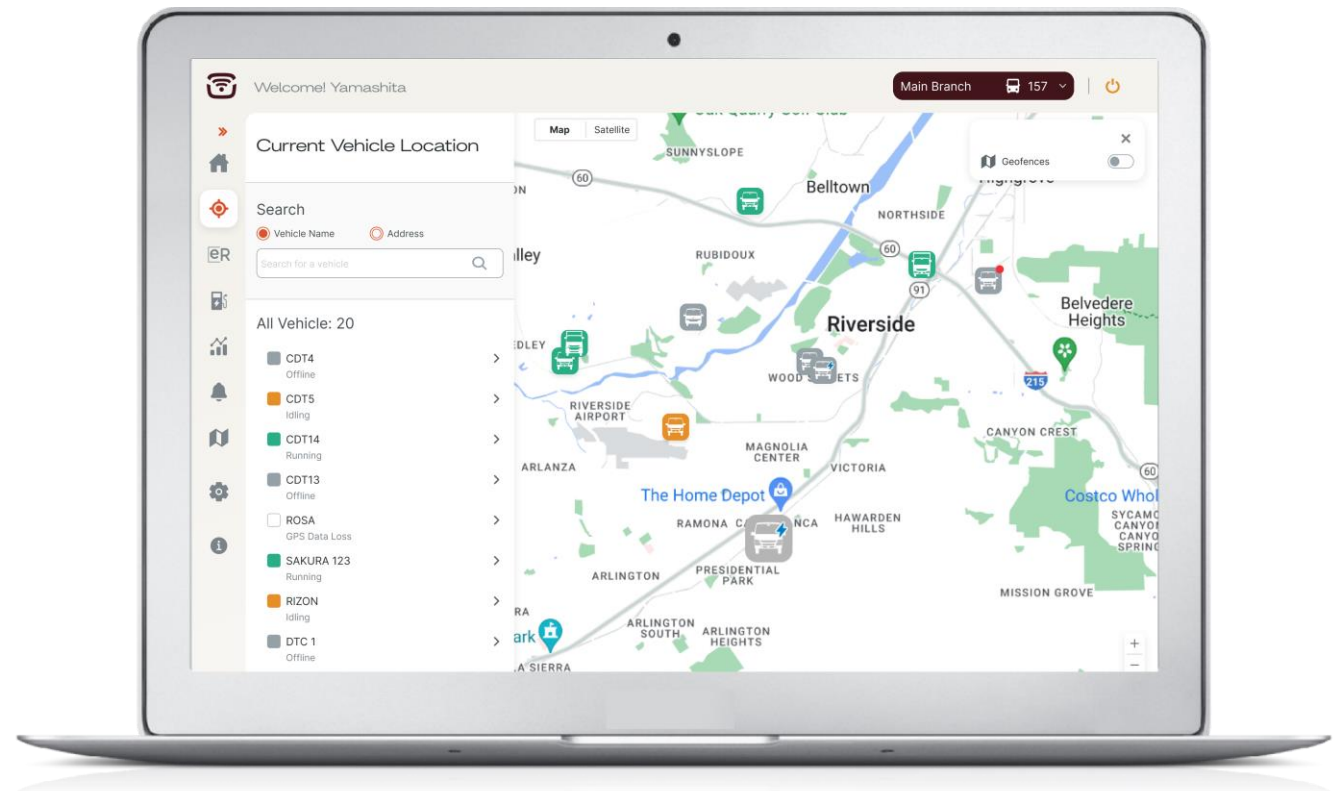
Track & Trace every single truck on a daily basis, including their daily routes and critical safety events

Features

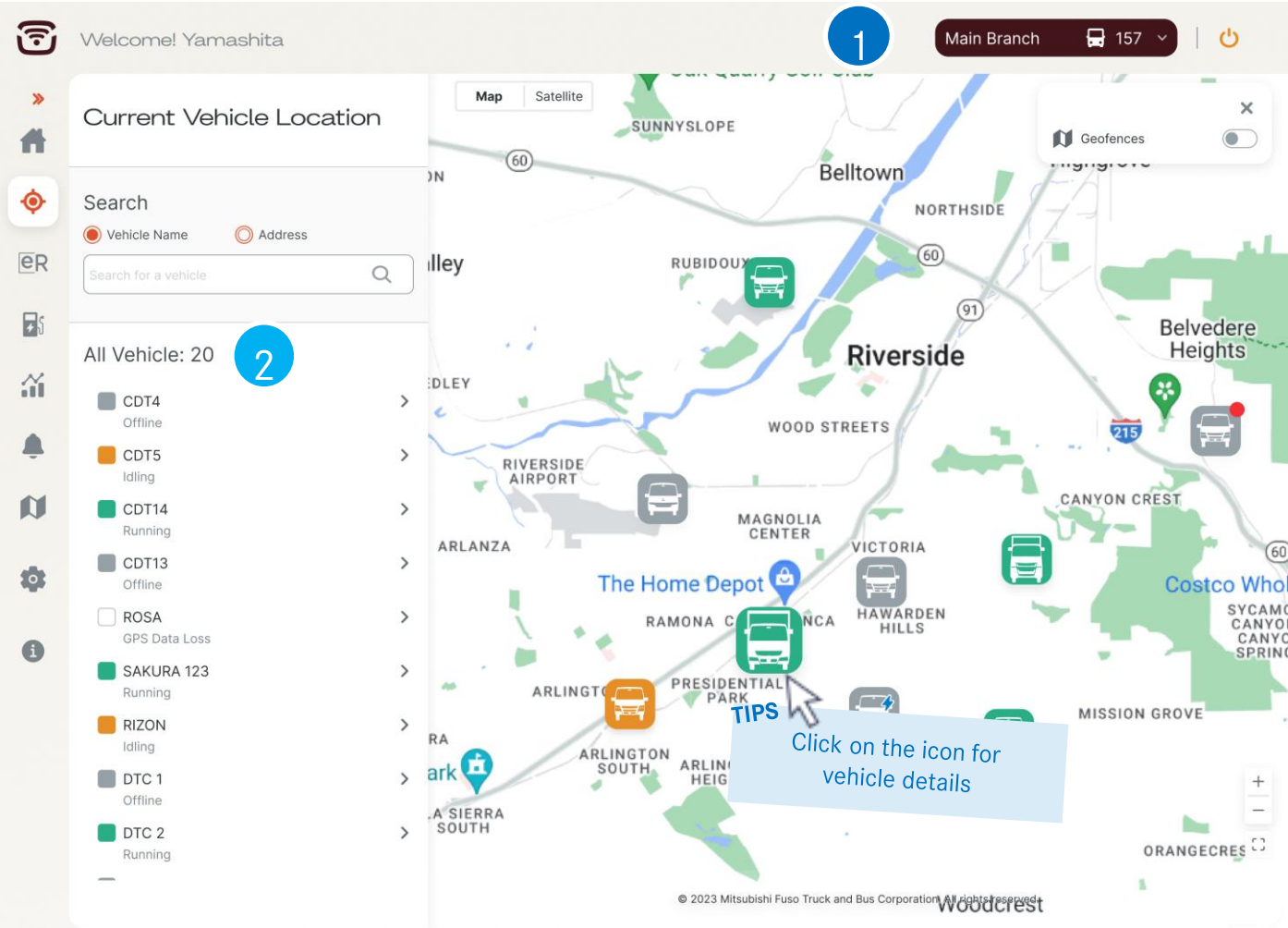
- Real-time location of all trucks
- Daily trip history including routes and safety-relevant events
- Route playback feature to watch truck trip route from start to end

Customer Benefits

- 📍 Efficient checks to locate vehicles without contacting the driver, in case of emergency or inability to communicate with the driver
- 📍 Tracking of vehicle arrival at customer side
- 📍 Identification of unsafe events from trip history analysis



02 Track & Trace



① Change Branch

② Vehicle List



Running



Idling



Off

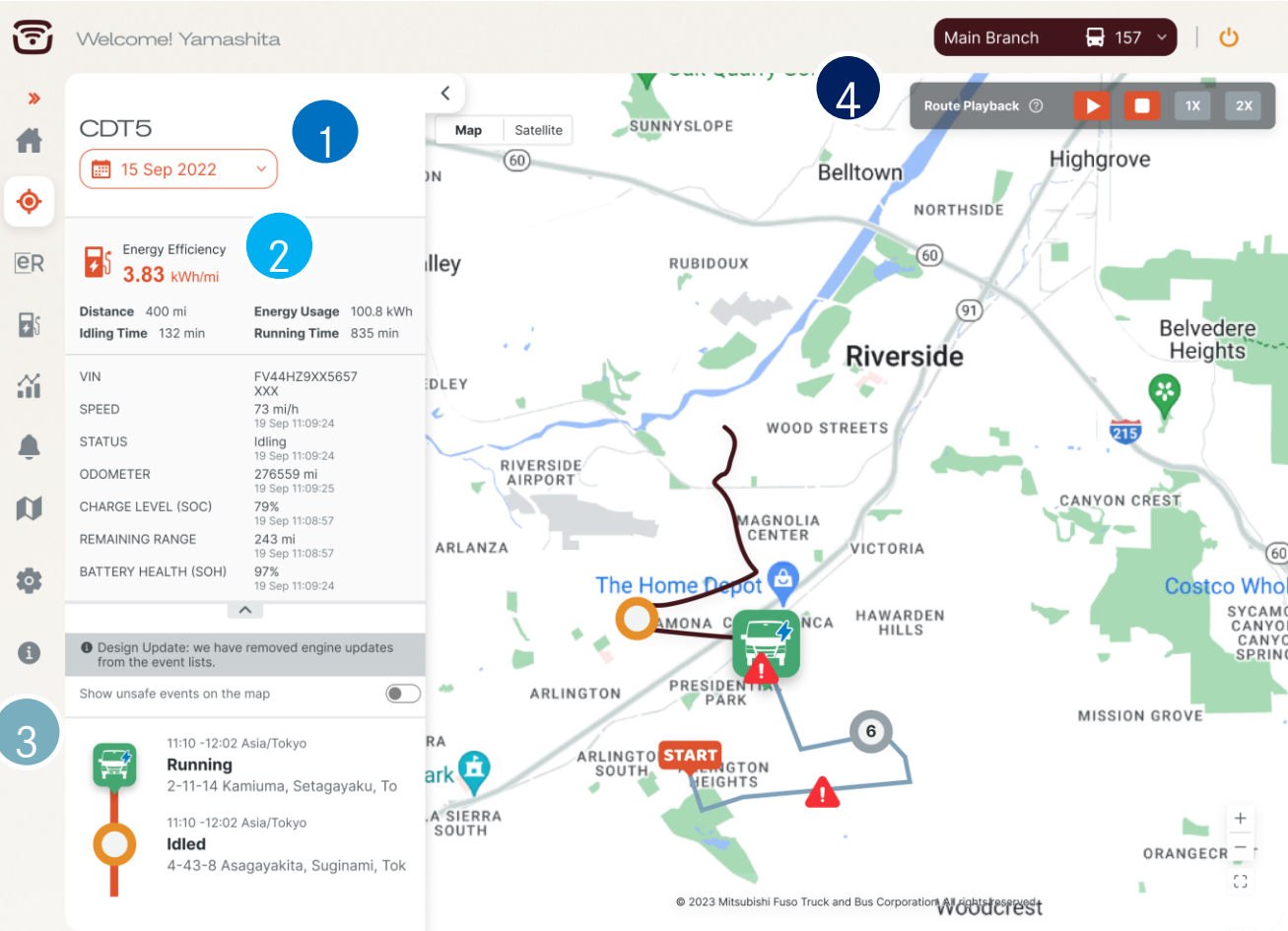


Possible Device Communication Problem



Danger

02 Track & Trace (2)



① Change the Date

② Individual Vehicle Data

③ Safety-relevant Events

- START** Start
- END** End
- Idling** Idling
- Stopped** Stopped
- Harsh Break or Acceleration** (Red exclamation mark icon)
- Current Location** (Green car icon)

④ Route Playback

Visualization of complete route in two speed modes





03 eRANGE & BHM

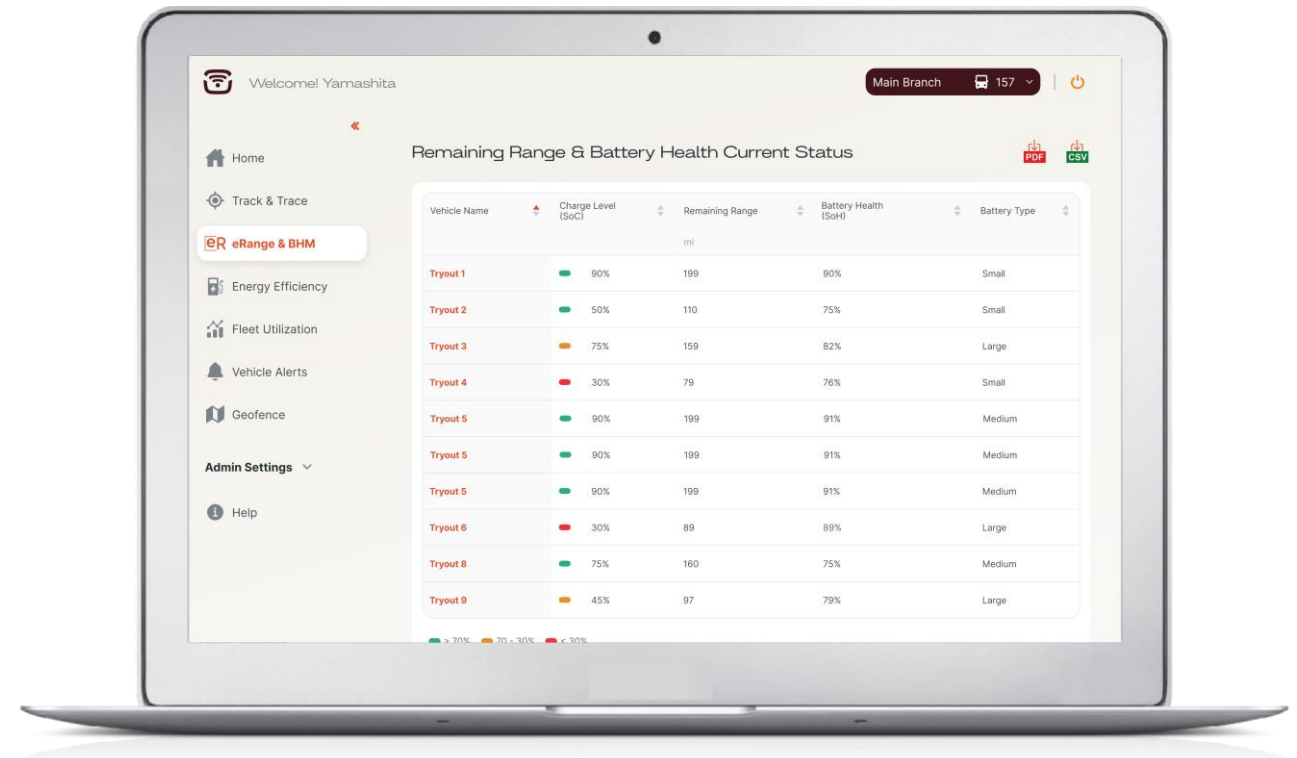
Track and monitor Battery State of Charge (SoC), State of Health (SoH), and Remaining Range

Features

- Real-time battery status
- Updated remaining range at any point of time

Customer Benefits

- Remote monitoring of battery status 
- Potential use of maximum range by customer 
- Reduced customer route anxiety



03 eRange & BHM

Welcome! Yamashita

Main Branch 157

Home

Track & Trace

eRange & BHM

Energy Efficiency

Fleet Utilization

Vehicle Alerts

Geofence

Admin Settings

Help

Remaining Range & Battery Health Current Status

Vehicle Name

Charge Level (SoC)

Remaining Range

Battery Health (SoH)

Battery Type

Vehicle Name	Charge Level (SoC)	Remaining Range	Battery Health (SoH)	Battery Type
Tryout 1	90%	199	90%	Small
Tryout 2	50%	110	75%	Small
Tryout 3	75%	159	82%	Large
Tryout 4	30%	79	76%	Small
Tryout 5	90%	199	91%	Medium
Tryout 5	90%	199	91%	Medium
Tryout 5	90%	199	91%	Medium
Tryout 6	30%	89	89%	Large
Tryout 8	75%	160	75%	Medium
Tryout 9	45%	97	79%	Large

> 70%

70 - 30%

< 30%

Showing 1 to 10 of 430 entries

<

1

2

3

...

1337

- ① Open 'eRange & BHM' for SOC, SOH, and more
- ② State of Charge (SoC), Remaining Range, State of Health (SoH) and Battery type of Vehicle
- ③ Click "<" or ">" to move between pages and view all vehicles

04 Energy Efficiency

Home

Track & Trace

eRange & BHM

Energy Efficiency

Fleet Utilization

Vehicle Alerts

Geofence

Admin Settings

Help

Welcome! Yamashita

Main Branch 157

Energy Efficiency

You can view monthly data for last 13 months.
You can click on the row to see corresponding vehicle performance.

PDF CSV Current Month

Vehicle Name	Energy Efficiency (This Month)	Energy Efficiency (Last Month)	Change From Last Month	Distance	Energy Usage	Idling Time
	kWh/mi	kWh/mi	kWh/mi %	mi	kWh	(min)
FUSOなつみ	2.89	2.89	-0.96 -0.96	200.33	1,509.87	456
FUSOなつみ	2.89	2.89	-0.96 -0.96	200.33	1,509.87	456
FUSOなつみ	2.89	2.89	-0.96 -0.96	200.33	1,509.87	456
FUSOなつみ	2.89	2.89	-0.96 -0.96	200.33	1,509.87	456
FUSOなつみ	2.89	2.89	-0.96 -0.96	200.33	1,509.87	456
FUSOなつみ	2.89	2.89	-0.96 -0.96	200.33	1,509.87	456
FUSOなつみ	2.89	2.89	-0.96 -0.96	200.33	1,509.87	456
FUSOなつみ	2.89	2.89	-0.96 -0.96	200.33	1,509.87	456
FUSOなつみ	2.89	2.89	-0.96 -0.96	200.33	1,509.87	456
FUSOなつみ	2.89	2.89	-0.96 -0.96	200.33	1,509.87	456

Showing 1 to 10 of 430 entries

1

2

3

TIPS Click for details

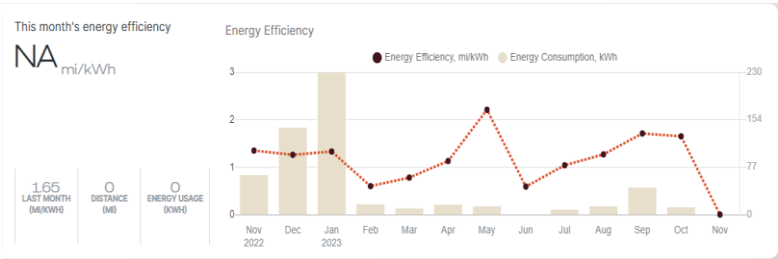
© 2023 Mitsubishi Fuso Truck and Bus Corporation. All rights reserved.

① Change Month

② Energy Efficiency Data



Download Data as .pdf or .xls



More Details

③ Sort Data



04 ENERGY EFFICIENCY

Use telematics devices to track and monitor the energy efficiency of your vehicles

Features

- Displays energy efficiency of each vehicle in the units of mi/kWh
- Allows easy comparison of energy efficiency to previous month
- Get a graphical or tabular view of energy efficiency
- Allows different sort settings to easily filter specific vehicles

Customer Benefits

- ♥ Helps track energy optimization for each vehicle
- ♥ Reduces electricity costs and increase sustainability
- ♥ Daily tracking and monthly comparison of energy efficiency, resulting in better control and transparency of fleet energy usage

Welcomel Yamashita Main Branch 157

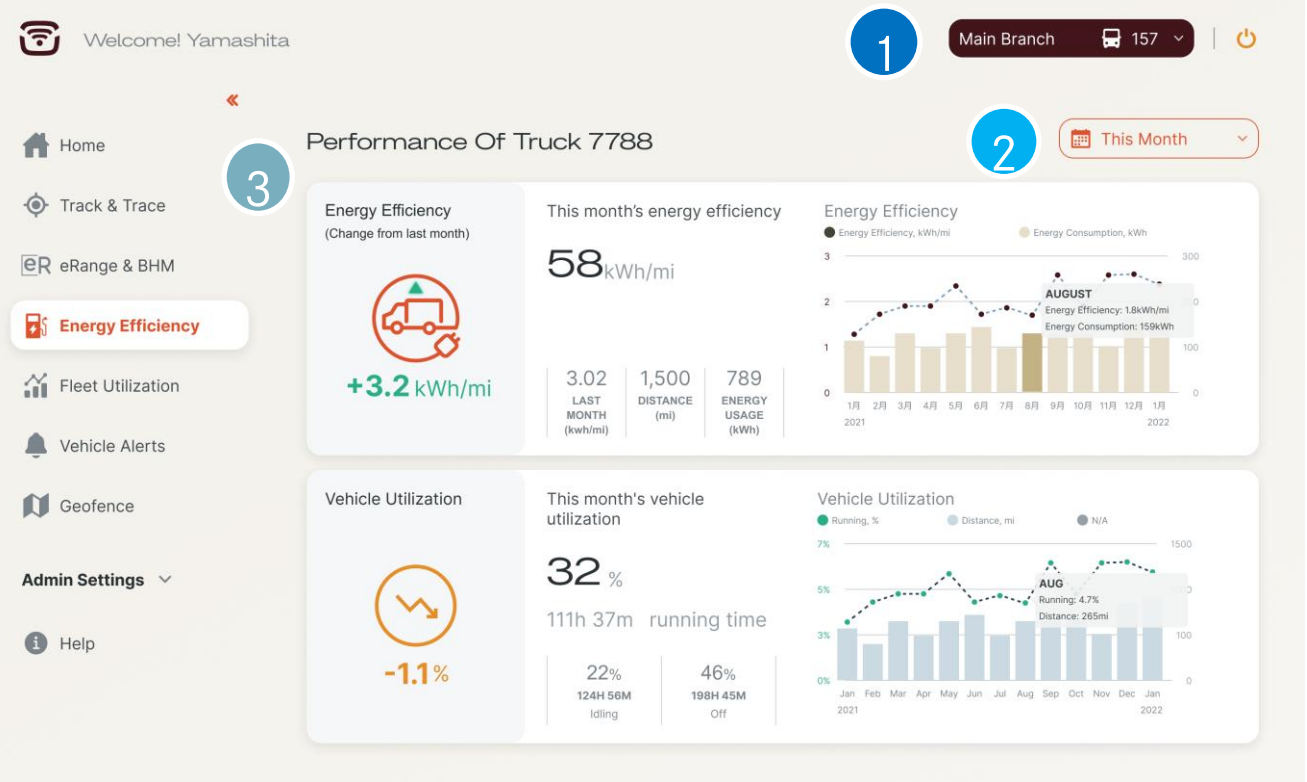
Energy Efficiency

You can view monthly data for last 13 months. You can click on the row to see corresponding vehicle performance.

Vehicle Name	Energy Efficiency (This Month)	Energy Efficiency (Last Month)	Change From Last Month	Distance	Energy Usage	Idling Time
	kWh/mi	kWh/mi	kWh/mi %	mi	kWh	(min)
FUSOなつみ	2.89	2.89	-0.96 -0.96	200.33	1,509.87	456
FUSOなつみ	2.89	2.89	-0.96 -0.96	200.33	1,509.87	456
FUSOなつみ	2.89	2.89	-0.96 -0.96	200.33	1,509.87	456
FUSOなつみ	2.89	2.89	-0.96 -0.96	200.33	1,509.87	456
FUSOなつみ	2.89	2.89	-0.96 -0.96	200.33	1,509.87	456
FUSOなつみ	2.89	2.89	-0.96 -0.96	200.33	1,509.87	456
FUSOなつみ	2.89	2.89	-0.96 -0.96	200.33	1,509.87	456
FUSOなつみ	2.89	2.89	-0.96 -0.96	200.33	1,509.87	456
FUSOなつみ	2.89	2.89	-0.96 -0.96	200.33	1,509.87	456
FUSOなつみ	2.89	2.89	-0.96 -0.96	200.33	1,509.87	456

© 2023 Mitsubishi Fuso Truck and Bus Corporation. All rights reserved.

04 Vehicle Performance Details



- ① Change Branch
- ② Change Month
- ③ Monthly Individual Vehicle Performance
See vehicle summary of Energy Efficiency and Vehicle Utilization



More content explanation on the next page

04 Vehicle Performance Details (2)

2

Daily 1 Sep - 16 Sep

1



Date	Running Time	Idling Time	Distance	Energy Usage	Energy Efficiency
	minutes	minutes	mi	kWh	kWh/mi
10 Sep	100	70	120	72	1.66
9 Sep	100	70	120	72	1.66
8 Sep	100	70	120	72	1.66
7 Sep	100	70	120	72	1.66
6 Sep	100	70	120	72	1.66
5 Sep	100	70	120	72	1.66
4 Sep	100	70	120	72	1.66
3 Sep	100	70	120	72	1.66
2 Sep	100	70	120	72	1.66
1 Sep	100	70	120	72	1.66

56件中、1 - 10を表示

<

1

2

3

...

1337

>

© 2023 Mitsubishi Fuso Truck and Bus Corporation. All rights reserved.

TIPS

Click here to go to the next page

① Download Data



Download Data as .pdf or .xls

② Daily Individual Vehicle Performance



05 FLEET UTILIZATION

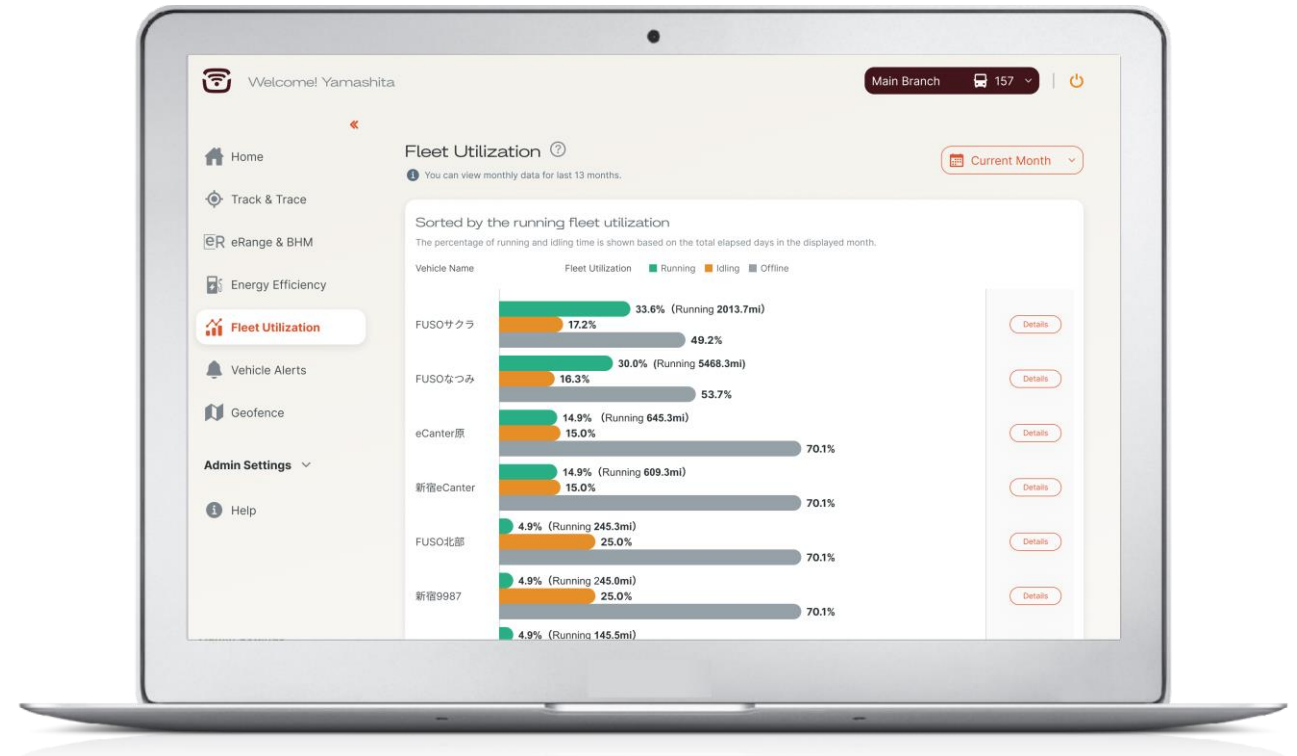
Monitor your fleet's performance based on miles driven, hours on the road, and idle time.

Features

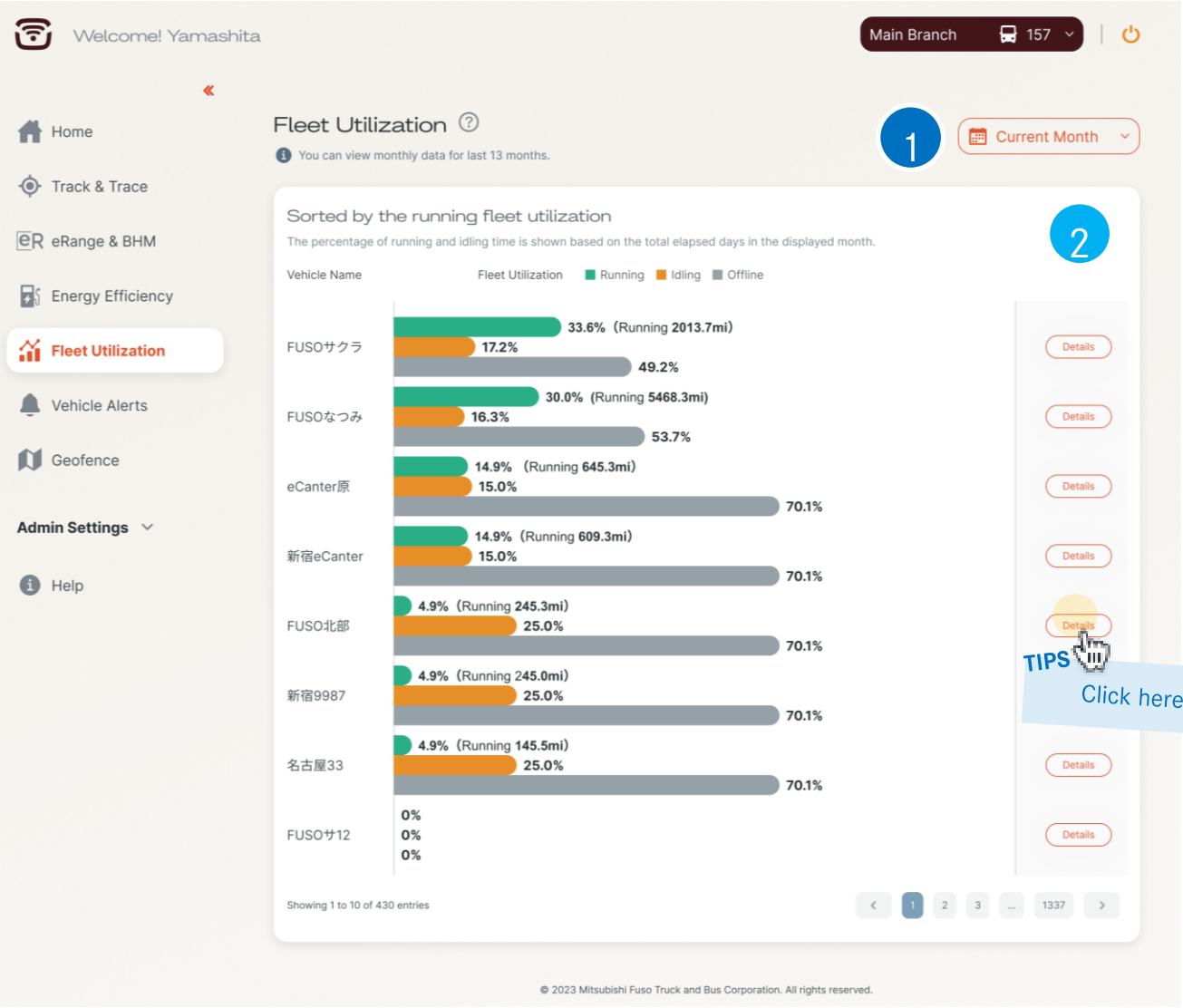
- Shows fleet's total mileage
- Get a graphical or tabular view of fleet utilization
- Shows fleet's utilization level (by categories running, idling, off) by total hours

Customer Benefits

- 📍 Performance tracking of vehicle and fleet utilization
- 📍 Improve fleet utilization efficiency and operational transparency
- 📍 Insights support the optimization of operations management



05 Fleet Utilization



① Change Month

② Fleet Utilization Data

TIPS

Click here for details



06 VEHICLE ALERTS

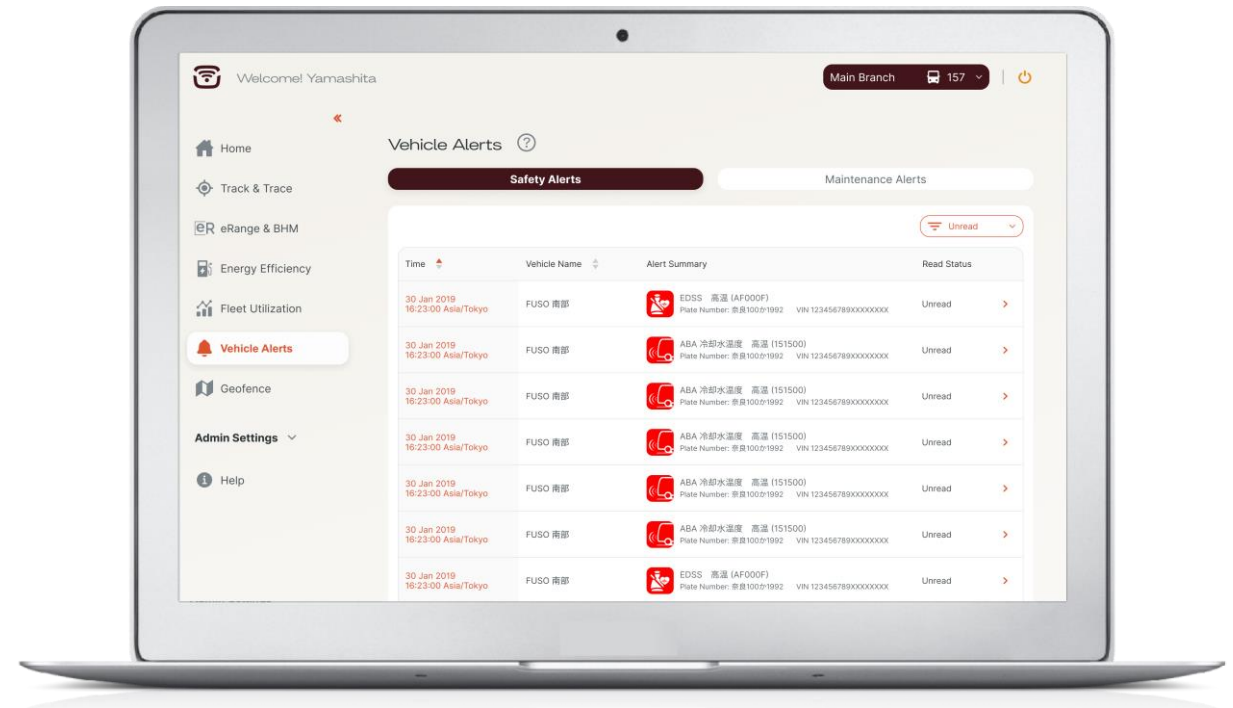
Increase your uptime and safety with our 24/7 assistance center that will contact you instantly if there is a problem with your vehicle.

Features

- Reduced labor and service time & costs
- Reduced replacement parts costs
- Ensure continuous product optimization

Customer Benefits

- ① Our diagnostic trouble codes are implemented and continuously monitor the truck's health
- ① Real-time alert notifications on the dashboard as soon as a diagnostic code is active
- ① Immediate action by Customer Assistance Center (CAC) in case of technical problems (notification of fleet manager & workshop)



06 Vehicle Alerts: Safety Alerts

📶 Welcome! Yamashita

1 Main Branch 🚚 157 🔌

🏠 Home

📍 Track & Trace

📊 eRange & BHM

🔌 Energy Efficiency

📈 Fleet Utilization

🔔 Vehicle Alerts

📁 Geofence

⚙️ Admin Settings

📖 Help

Vehicle Alerts ⓘ

2 Safety Alerts Maintenance Alerts

3 🔍 Unread

Time	Vehicle Name	Alert Summary	Read Status
30 Jan 2019 16:23:00 Asia/Tokyo	FUSO 南部	EDSS 高温 (AF000F) Plate Number: 奈良100か1992 VIN 123456789XXXXXXXX	Unread >
30 Jan 2019 16:23:00 Asia/Tokyo	FUSO 南部	ABA 冷却水温度 高温 (151500) Plate Number: 奈良100か1992 VIN 123456789XXXXXXXX	Unread >
30 Jan 2019 16:23:00 Asia/Tokyo	FUSO 南部	ABA 冷却水温度 高温 (151500) Plate Number: 奈良100か1992 VIN 123456789XXXXXXXX	Unread >
30 Jan 2019 16:23:00 Asia/Tokyo	FUSO 南部	ABA 冷却水温度 高温 (151500) Plate Number: 奈良100か1992 VIN 123456789XXXXXXXX	Unread >
30 Jan 2019 16:23:00 Asia/Tokyo	FUSO 南部	ABA 冷却水温度 高温 (151500) Plate Number: 奈良100か1992 VIN 123456789XXXXXXXX	Unread >
30 Jan 2019 16:23:00 Asia/Tokyo	FUSO 南部	ABA 冷却水温度 高温 (151500) Plate Number: 奈良100か1992 VIN 123456789XXXXXXXX	Unread >
30 Jan 2019 16:23:00 Asia/Tokyo	FUSO 南部	EDSS 高温 (AF000F) Plate Number: 奈良100か1992 VIN 123456789XXXXXXXX	Unread >
30 Jan 2019 16:23:00 Asia/Tokyo	FUSO 南部	EDSS 高温 (AF000F) Plate Number: 奈良100か1992 VIN 123456789XXXXXXXX	Unread >

Showing 1 to 10 of 56 entries

< 1 2 3 ... 1337 >

- ① Change Branch
- ② Safety Alerts
- ③ Sort Data



07 GEOFENCE

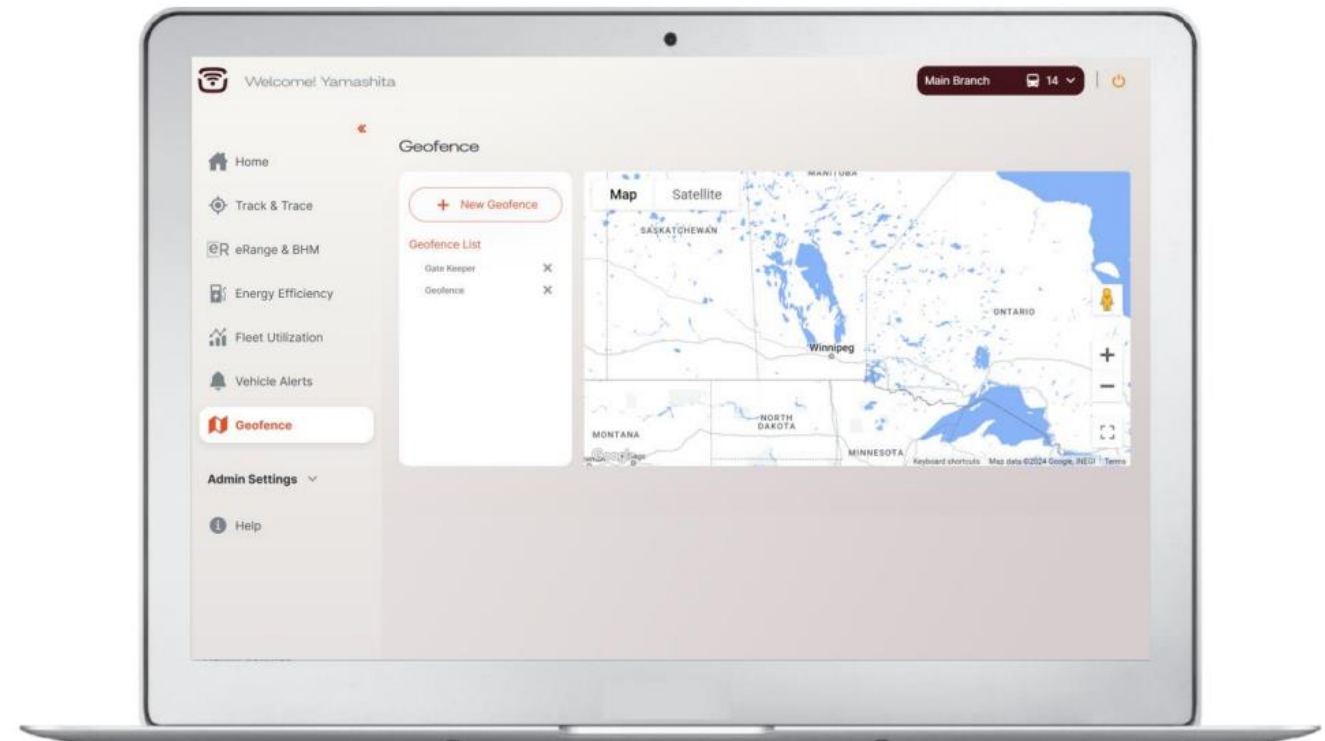
Geofence is a feature that extends the tracking functionality. It allows you to mark the boundary around a location to define an area. If a vehicle in your fleet enters this area, you will be notified.

Features

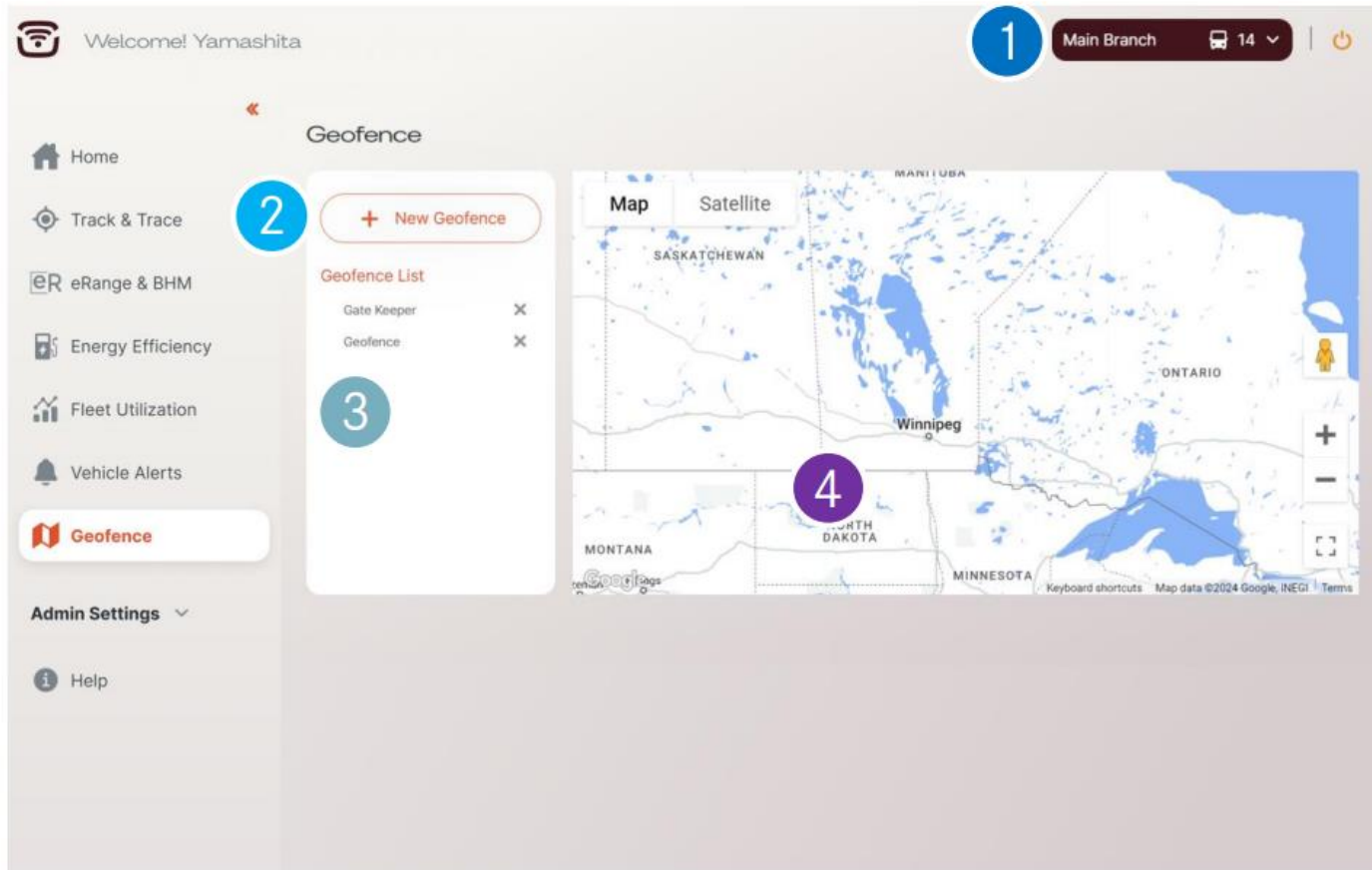
- Allows users to add a new fence area
- Allows users to add different geofences for different branches
- Allows users to view current geofences in a list or map view

Customer Benefits

- 📍 Easily receive notifications when vehicles enter a specific area
- 📍 Provide customers with accurate and timely information about the location and estimated time of arrival of their deliveries.
- 📍 Identify hazardous areas and prevent trucks from entering them, significantly improving operational safety



07 Geofence: Overview



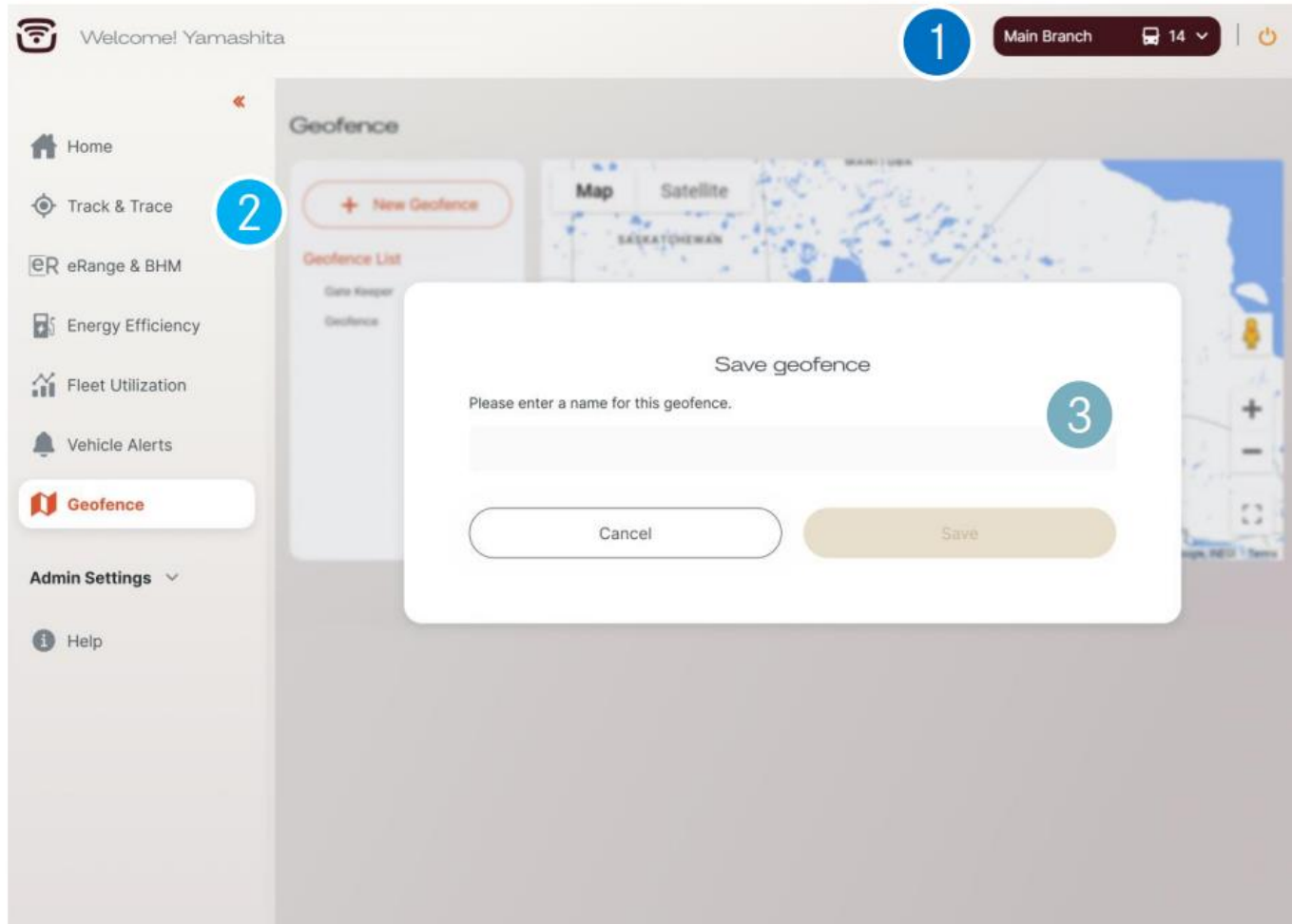
① Change Branch

② Add a New Fence Area

③ Geofence List
List View/Map View

④ Map View

07 Geofence: Creating a New Geofence



① Select a Branch

② Click on + Add New Fence Area

③ Enter a Name for Fence and Click 'Save'

Drag the map and position the fence area within the rectangle. After creating the fence area, you will see notifications when you log into RIZONCONNECT based on vehicle behavior in your geofence. You can find them on the **home page**.



08 ADMIN SETTINGS

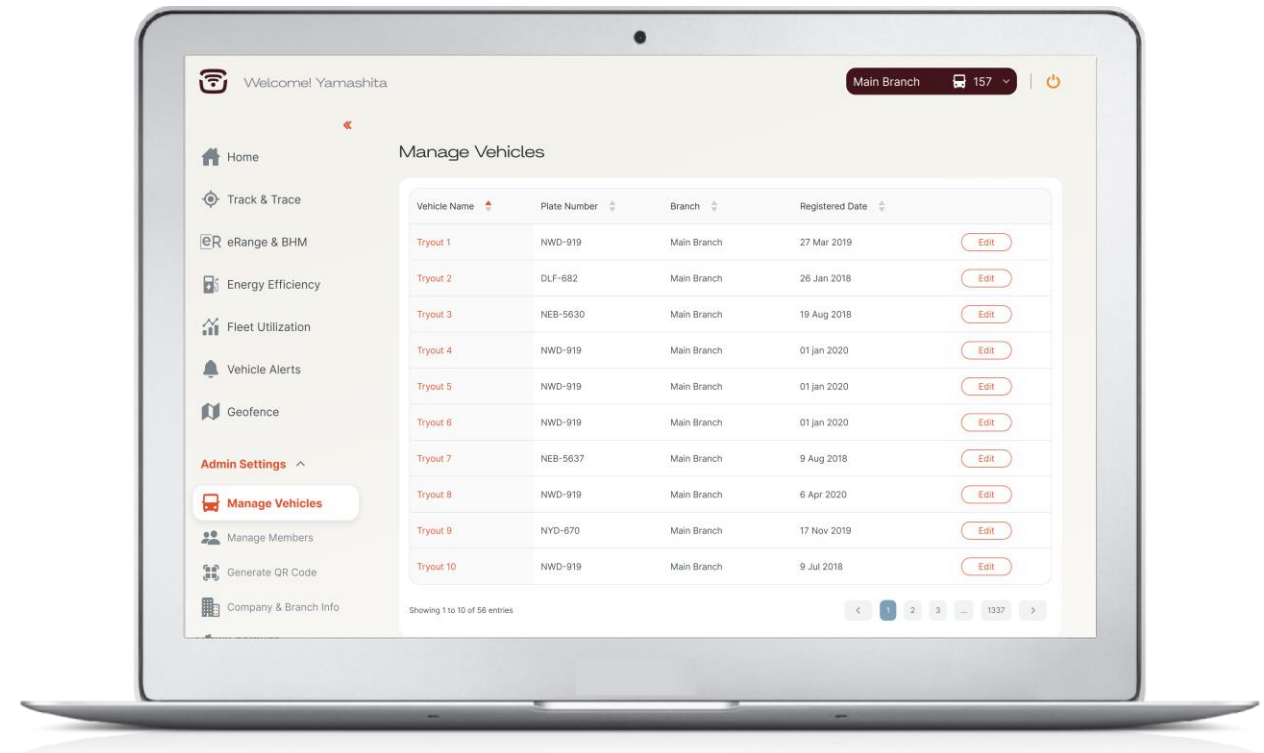
Manage your branch, vehicles and members from a single page

Features

- Edit and add vehicles to the system
- Edit and add members to the system
- Edit company & branch information
- Easy sorting system through table visualization

Customer Benefits

- ♥ Reduce the time and paperwork required to change administrative information
- ♥ Enables easy data management and permission settings
- ♥ Easily assign different branches and roles to members



08 Admin Settings: Manage Vehicles

Home

Track & Trace

eRange & BHM

Energy Efficiency

Fleet Utilization

Vehicle Alerts

Geofence

Admin Settings

Manage Vehicles

Manage Members

Generate QR Code

Company & Branch Info

Manage Drivers

Email

Alert/Notification

Manage Vehicles

Vehicle Name	Plate Number	Branch	Registered Date	
Tryout 1	NWD-919	Main Branch	27 Mar 2019	Edit
Tryout 2	DLF-682	Main Branch	26 Jan 2018	Edit
Tryout 3	NEB-5630	Main Branch	19 Aug 2018	Edit
Tryout 4	NWD-919	Main Branch	01 Jan 2020	Edit
Tryout 5	NWD-919	Main Branch	01 Jan 2020	Edit
Tryout 6	NWD-919	Main Branch	01 Jan 2020	Edit
Tryout 7	NEB-5637	Main Branch	9 Aug 2018	Edit
Tryout 8	NWD-919	Main Branch	6 Apr 2020	Edit
Tryout 9	NYD-670	Main Branch	17 Nov 2019	Edit
Tryout 10	NWD-919	Main Branch	9 Jul 2018	Edit

Showing 1 to 10 of 56 entries

Main Branch

157

Welcome! Yamashita

① Click on 'Manage Vehicles'

② Sort Data
Ascending/Descending

③ Edit Vehicle Information

Edit Vehicle Information

Vehicle Name *

EC21TTT1583742

Plate Number *

EC21TTT1560083742

Branch *

Main Branch

6

New Branch

Fleet Manager *

Rizon Test User

VIN

EC21TTT1560083742

Time Zone

America/Los_Angeles

Registered Date

16 May 2022

Save

TIPS
Click here to add new branch

08 Admin Settings: Manage Members

Home

Track & Trace

eRange & BHM

Energy Efficiency

Fleet Utilization

Vehicle Alerts

Geofence

Admin Settings

Manage Vehicles

Manage Members

Generate QR Code

Company & Branch Info

Manage Drivers

Email

Alert/Notification

Welcome! Yamashita

All Branches 157

Manage Members

New Member

Member Name	Branch	Role	Email Address	
International RH Series	Main Branch	Viewer	alexei.boars@example.com	Edit
International RH Series	Main Branch	Viewer	alexei.boars@example.com	Edit
International RH Series	Main Branch	Viewer	alexei.boars@example.com	Edit
International RH Series	Main Branch	Viewer	alexei.boars@example.com	Edit
International RH Series	Main Branch	Viewer	alexei.boars@example.com	Edit
International RH Series	Main Branch	Viewer	alexei.boars@example.com	Edit
International RH Series	Main Branch	Viewer	alexei.boars@example.com	Edit
International RH Series	Main Branch	Viewer	alexei.boars@example.com	Edit
International RH Series	Main Branch	Viewer	alexei.boars@example.com	Edit

Showing 1 to 10 of 56 entries

1

2

3

© 2017 Mitsubishi Fuso Truck and Bus Corporation. All rights reserved.

1 Click on 'Manage Members'

2 Sort Data
Ascending/Descending

3 Edit Member Information

< Edit Member Information

Member Name *

Alexander Loesing

Email Address *

alexander.loesing@daimlertruck.com

User ID *

alexander.loesing.exportmarketus@rizonconnect.com

Password *

Confirm Password *

Branch *

Main Branch

Member Role

Admin

Member

Viewer

Phone Number

Emergency Contact Number

Driver ID

Save

Unregister this member

TIPS
Unregister member

08 Admin Settings: Company & Branch Info

Home

Track & Trace

eRange & BHM

Energy Efficiency

Fleet Utilization

Vehicle Alerts

Geofence

Admin Settings

Manage Vehicles

Manage Members

Generate QR Code

Company & Branch Info

Manage Drivers

Email

Alert/Notification

Welcome! Yamashita

Main Branch 157

Company & Branch Info

New Branch

Branch Name	Number of Vehicles	Phone Number	Address	
International RH Series	1	+ 49 1234564444	2972 Westheimer Rd. Santa Ana, Illinois 85486	Edit
International RH Series	1	+ 49 1234564444	2972 Westheimer Rd. Santa Ana, Illinois 85486	Edit
International RH Series	1	+ 49 1234564444	2972 Westheimer Rd. Santa Ana, Illinois 85486	Edit
International RH Series	1	+ 49 1234564444	2972 Westheimer Rd. Santa Ana, Illinois 85486	Edit
International RH Series	1	+ 49 1234564444	2972 Westheimer Rd. Santa Ana, Illinois 85486	Edit
International RH Series	1	+ 49 1234564444	2972 Westheimer Rd. Santa Ana, Illinois 85486	Edit
International RH Series	1	+ 49 1234564444	2972 Westheimer Rd. Santa Ana, Illinois 85486	Edit
International RH Series	1	+ 49 1234564444	2972 Westheimer Rd. Santa Ana, Illinois 85486	Edit
International RH Series	1	+ 49 1234564444	2972 Westheimer Rd. Santa Ana, Illinois 85486	Edit
International RH Series	1	+ 49 1234564444	2972 Westheimer Rd. Santa Ana, Illinois 85486	Edit

Showing 1 to 10 of 56 entries

© 2023 Mitsubishi Fuso Truck and Bus Corporation. All rights reserved.

① Click on ‘Company & Branch Info’

② Sort Data
Ascending/Descending

③ Edit Company & Branch Info
To register new driver

Edit Branch Information

Branch Name *

Main Branch

Address

Phone

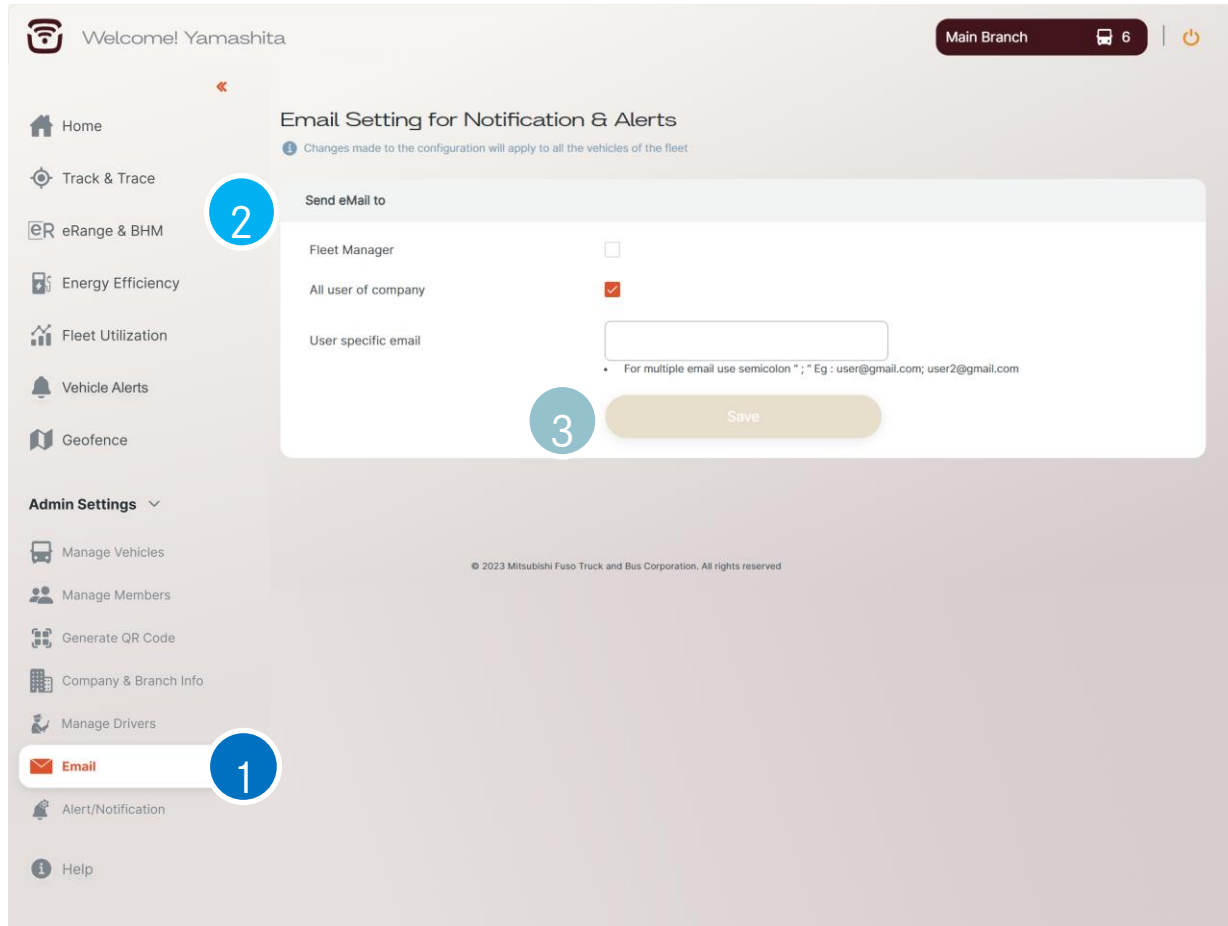
FAX

Save

Unregister this branch

TIPS
Unregister branch

08 Admin Settings: Email



08 Admin Settings: Alert/Notification

Welcome! Yamashita

Main Branch 157

Home

Track & Trace

eRange & BHM

Energy Efficiency

Fleet Utilization

Vehicle Alerts

Geofence

Admin Settings

Manage Vehicles

Manage Members

Generate QR Code

Company & Branch Info

Manage Drivers

Email

Alert/Notification

Alert Setting

- Changes made to the configuration will apply to all the electric vehicle of the fleet.
- Only user with admin capability can set the threshold
- Once you will set the value eMail will be automatically trigger.

Set Min Charge Level (SoC) value

Charge Level: 0%

Send email when min. value is reached: ☐

Set Min Remaining Range Value in Mi

Remaining Range in Mi: 260

Send email when min. value is reached: ☐

Notification Setting

Set Max Charge Level (SoC) value

Charge Level: 16%

Send email when max. charge is done: ☐

TIPS
Click here to receive SoC value via email notification

4 Save

© 2023 Mitsubishi Fuso Truck and Bus Corporation. All rights reserved.

① Click on 'Alert/Notification'

② Set Min Charge Level (SoC) Value

③ Set Max Charge Level (SoC) Value

④ Click on Save



09 HELP

If you have any problems, have a look at the help page

Features

① Frequently Asked Questions

② User Manuals

③ Contact Information

